
HEIGHT

12' - 30'

POLE SHAFT

The Pole shaft will be constructed of seamless extruded tube of 6063 aluminum alloy per the requirements of ASTM B221. The shaft assembly shall be full length heat treated after base plate weld to produce a T6 temper.

BASE

4-Bolt Cast Aluminum Base Flange of alloy 356-T6.

ANCHOR BOLTS

All anchor bolts are hot dipped galvanized steel and come with two galvanized nuts and washers per bolt. Minimum yield strength 50,000 psi. Anchor bolts are not included for Custom Bolt Circle.

NUT COVER

Aluminum nut covers (alloy 356-F) and stainless steel hex head attaching screws.

HAND-HOLE

4"-5" Butt Diameters - 2" x 4" Hand-hole with curved lap style aluminum door and 2 stainless steel self tapping screws. A ground provision incorporating a tapped 1/4"-20NC hole is provided.

6" Butt Diameter - Reinforced 3" x 5" curved cast aluminum frame (alloy 356 - T6) with aluminum door and 2 stainless steel hex head screws. A ground provision incorporating a tapped 3/8" hole is provided opposite of hand-hole.

7" + Butt Diameter - Reinforced 4" x 6" curved cast aluminum frame (alloy 356 - T6) with aluminum door and 2 stainless steel hex head screws. Reinforced frame will contain a tapped 3/8"-16NC grounding provision.

POLE CAP

All poles come with a removable polymer pole cap installed. All pole caps are black finish. Aluminum Pole Cap option is painted to match pole.

FINISH

All poles are treated with shot blast media for a near white finish, power blasted with 100 psi prior to powder coat application. Electrostatically applied AAMA 2604 polyester powder coat with a 3 to 5 mil thickness for maximum adherence.

VIBRATION DAMPENER

The Vibration Dampener is factory installed and consists of a rugged galvanized chain coated with heavy duty polyester tubing that is factory secured at the bottom 2-3rds of the pole and can optionally be secured in the field by a contractor at the base during installation.

BUY AMERICAN

To ensure the latest BAA/TAA/BABA Standards are being met, please select BAA, TAA, or BABA in the options section. Please contact the factory before placing an order for any NLS products requesting BAA (Buy American Act), TAA (Trade Agreement Act), or BABA (Build America, Buy America).

Project Name:

Type:

RTAP ORDERING GUIDE

Cat#	Height	Gauge	Butt Diameter	Top Diameter
Round Tapered Aluminum Pole (RTAP)	12' (12)	.125 Wall Thickness (125)	4" (4)	3" (3)
	14' (14)	.156 Wall Thickness (156)	5" (5)	4" (4)
	15' (15)	.188 Wall Thickness (188)	6" (6)	4.5" (45)
	18' (18)	.219 Wall Thickness (219)	7" (7)	5" (5)
	20' (20)	.250 Wall Thickness (250)	8" (8)	
	25' (25)	.312 Wall Thickness (312)	9" (9)	
	30' (30)	*Contact Factory for EPA Information	10" (10)	
	35' (35)		*Check EPA Chart for available options	
	40' (40)			

Mounting	Color	Bolts	Options	Options
Single (SGL)	Bronze Textured (BRZ)	3/4" x 30" (3430)	GFI Kit (GFI20A) ^{3, 4, 5}	Anodized Hiawatha Metal #311 (ANO)
Double (D-90) (D-180)	White Textured (WHT)	1" x 36" (136)	20 Amp Weather Proof Receptacle	UL Certified with label (UL) ¹
Triple (T-90)	Smooth White Gloss (SWT)	Less Anchor Bolts (LAB)	GFI Provision Only (PROV) ^{4, 5}	Aluminum Pole Cap (APC) ²
Quad (QD)	Silver Metallic (SVR)		Round Base Cover (RBC)	Buy American Act (BAA) ²
No Drill (ND) <i>*Tenon Option</i>	Black Textured (BLK)		<i>*Consult Factory for Pricing</i>	Trade Agreement Act (TAA) ²
Tenon	Smooth Black Gloss (SBK)		1/2" Coupling (COUP) ⁴	Build America Buy American (BABA) ²
2-3/8" Round (T2R)	Graphite Textured (GPH)		<i>*Specify Location</i>	
3" Round (T3R)	Grey Textured (GRY)		Hinge Base Plate (HBP)	
	Green Textured (GRN)		<i>*20' Max Pole Height</i>	
	Hunter Green Textured (HGN)		Vibration Dampener (VD)	
	Custom (CS)		Extra Hand Hole (XHH) ⁴	
			<i>*Specify Location</i>	

NOTES:

1. Aluminum Pole Cap must be selected for UL Certified Pole Option
2. Consult Factory
3. Standard weatherproof cover comes standard with option.
For lockable cover requests, please contact factory
4. Specify the Height (in feet) from ground level and degree orientation
from wire access slot.
5. 120V Only

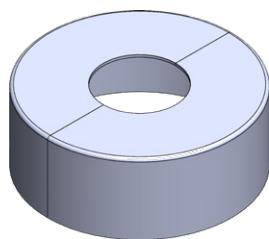
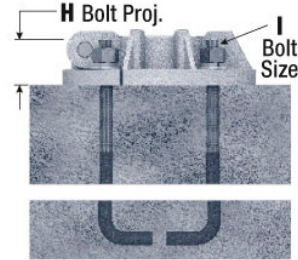
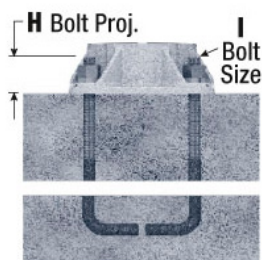
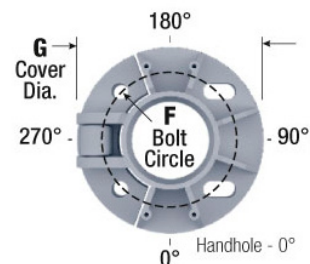
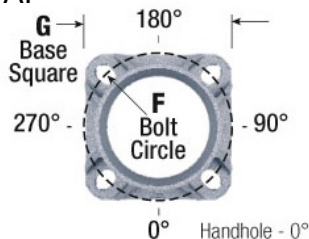


701 Kingshill Place, Carson, CA 90746
Call Us Today (310) 341-2037

nlsighting.com

PRODUCT SPECIFICATIONS

*Consult factory for EPA Data on RTAP



**OPTIONAL ROUND
BASE COVER**



**STANDARD
BASE DETAIL**



**OPTIONAL HINGED
BASE DETAIL**

CAUTION: Installation of poles without luminaire(s) will compromise pole strength. Any accessories attached to the pole, or other modifications done in the field, will compromise the pole strength and may result in pole failure. Wind load evaluations and provisions for appendages such as banner arms, signage, cameras, etc., must be evaluated and approved by the factory prior to placing an order. Additional evaluation and approval should be performed by the customer's local structural engineer on the project.

*Anchor Bolts are NOT included with Custom Bolt Circle.
*Do NOT pour concrete referencing this drawing. Consult Factory.
*Must Specify 4-Bolt Pattern.

*All wind loading calculations are based on sustained wind force plus an additional 1.3 gust.

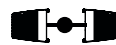
MOUNTING CONFIGURATION



Single
(SGL)



Double
(D-90)



Double
(D-180)



Triple
(T-90)



Quad
(QD)

BUY AMERICAN OPTION

While all of the NLS Lighting products listed in this document qualify for the Buy America(n) Act of 1933, we reserve the right to change our listings without notice.

The information provided above is for general informational purposes only. We encourage you to consult legal professionals for advice particular to your projects concerning BAA, TAA, BABA or Buy America.

Additional NLS Products that meet BAA, TAA standards can be found at the following link:

<https://nslighting.com/buy-american/>



701 Kingshill Place, Carson, CA 90746
Call Us Today (310) 341-2037

nslighting.com