

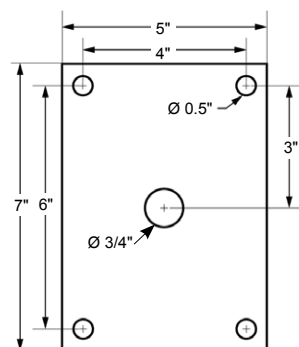
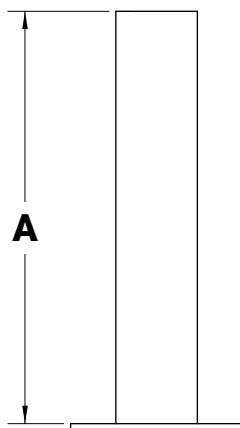
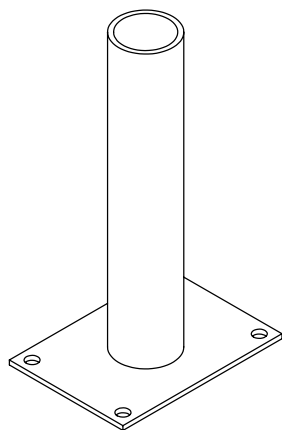


PIER MOUNT

Pier Mount is constructed of extruded steel tubing. Integrates with poles or tenons of 2-3/8" or 3" OD.

Contact NLS for custom configuration or others mounting options. Arms and Adapters are designed, tooled, fabricated and assembled in the USA.

MODEL	A
PRM	12", 18", 24" or custom length. Consult Factory for specifications.



Project Name:

Type:

## PIER MOUNT ORDERING GUIDE

Cat#	Length	Pole or Tenon	Color
Pier Mount (PRM)	12" (12)	2-3/8 Round OD (238R)	Bronze Textured (BRZ)
	18" (18)	3" Round OD (3R)	White Textured (WHT)
	24" (24)		Smooth White Gloss (SWT)
	Custom Length (XX)		Silver Metallic (SVR)
			Black Textured (BLK)
			Smooth Black Gloss (SBK)
			Graphite Textured (GPH)
			Grey Textured (GRY)
			Green Textured (GRN)
			Hunter Green Textured (HGN)
			Custom (CS)

NOTES:



701 Kingshill Place, Carson, CA 90746  
Call Us Today (310) 341-2037

[nlsighting.com](http://nlsighting.com)