



LED WATTAGE CHART

PART NUMBER	LED	WATTAGE
LIR-B-(6 or 8)-SYM-22	WHITE LED	22W
LIR-B-(6 or 8)-SYM-34	RGBW LED	34W

The Lira Bollard RGBW LED color changing (via Wireless Remote Control) column luminaire blends beauty, design, color and expression into a single powerful luminaire. Color rotations are Red, Green, Blue, and White.

Enjoy creating various lighting effects for all different applications or can be continuous warm, neutral, or cool white for an even glow.

Each bollard uses an acrylic lens, which is reinforced by integral tubing that creates a wireway for connection of top side and bottom side LEDs. Optional shields for lenses are available.

FUNCTION

- Symmetric Distribution
- 0-10V Dimming Drivers THD @ Max Load < 15%
Power factor @ Max Load < 0.95
- 3000K, 4000K, 5000K or RGBW
- CRI 80
- 3-5 Mils Powder Coat

RELIABILITY

- 5 Year Standard Warranty
- 20KA Surge Protection Standard

BUY AMERICAN


To ensure the latest BAA/TAA/BABA Standards are being met, please select BAA, TAA, or BABA in the options section. Please contact the factory before placing an order for any NLS products requesting BAA (Buy American Act), TAA (Trade American Act), or BABA (Build America, Buy America).



Project Name:

Type:

LIRA BOLLARD ORDERING GUIDE

Cat#	Height	Light Dist.	Wattage/Lens Ht.	Color Temp/CRI	Voltage
Lira Bollard 6" OD (LIR-B-6)	36" (36)	Symmetric (SYM)	<u>White LED (30K8, 40K8, 50K8)</u> 22W / 1" Lens (22)	3000K, 80 CRI (30K8)	120-277 (UNV)
Lira Bollard 8" OD (LIR-B-8)	42" (42)			4000K, 80 CRI (40K8)	347-480 (HV)
				5000K, 80 CRI (50K8)	
				<u>RGBW LED</u>	
	36" (36)	Symmetric (SYM)	34W / 1" Lens (34)	RGBW (RGB) ¹	
	42" (42)				
Mounting	Color	Controls Options	Options		
Internal Anchor Base (IAB)	Bronze Textured (BRZ)	Button Photocell (PC)	Marine Grade Finish (MGF)		
	White Textured (WHT)	Microwave Motion Sensor (MMS)	Emergency Battery Backup 4W (EM4)		
	Smooth White Gloss (SWT)	Microwave Motion Sensor (Custom Setting) (MMS-CS)	Emergency Battery Backup 8W (EM8)		
	Silver Metallic (SVR)	Custom Controls Integration (CCI) ³	House Side Shield (HSS)		
	Black Textured (BLK)	DMX/RDM Compatible Driver/Controller (DMX) ¹	Vandal Resistant Base (VRB) ⁵		
	Smooth Black Gloss (SBK)		Buy American Act (BAA) ⁴		
	Graphite Textured (GPH)		Trade Agreement Act (TAA) ⁴		
	Grey Textured (GRY)		Build America Buy American (BABA) ⁴		
	Green Textured (GRN)				
	Hunter Green Textured (HGN)				
	Custom (CS)				
<p>NOTES:</p> <ol style="list-style-type: none"> Standard RGBW is remote control operated for individual fixture programming. Please select "DMX" option for sophisticated grouping or programming requirements. Contact the factory for further details regarding DMX/RDM application requests. The LIRA Light Column with the "DMX" option will be compatible with DMX/RDM controls systems. DMX/RDM controls system would be provided by others. LIR-8 Only Please contact Factory for Custom Control Integration requests (nLight, NX, WaveLinx, Crestron, DMX/RDM, Synapse, Casambi, Dali II, Avi-On, or other control systems) Consult factory for all BAA/TAA/BABA requests Available with Bollard bodies 36" high or taller. 					
		701 Kingshill Place, Carson, CA 90746 Call Us Today (310) 341-2037			nlsighting.com

PRODUCT SPECIFICATIONS

ELECTRICAL

- 120-277 Volts (UNV) or 347-480 Volts (HV)
- 0-10V dimming driver
- Driver power factor at maximum load is $\geq .95$, THD maximum load is 15%
- LED Drivers Ambient Temp. Min is -40°C and Ambient Temp. Max ranges from 50°C to 55°C and, in some cases, even higher. Consult the factory for revalidation by providing the fixture catalog string before quoting and specifying it.
- All internal wiring UL certified for 600 VAC and 105°C
- Color temperatures: 3000K, 4000K, 5000K, RGBW
- Surge Protection: 20KA supplied as standard.
- DMX/RDM Compatible Driver/Controller Option (120V or 277V)

CONSTRUCTION

- Extruded and Cast Aluminum

OPTIONS

- MARINE GRADE FINISH (MGF) - A multi-step process creating protective finishing coat against harsh environments. Chemically washed in a 5 stage cleaning system. Pre-baked, Powder coated 3-5 mils of Zinc Rich Super Durable Polyester Primer. Oven Baked. Finished Powder Coating of Super Durable Polyester Powder Coat 3-5 mil thickness.
- GFI Kit - Optional Ground Fault Circuit Interrupter device protects from receiving electric shocks from faults in electrical devices.
- Controls Agnostic: Please contact factory for your preferred controls option. (nLight, NX, WaveLinx, Crestron, DMX/RDM, Synapse, Casambi, DALI II, Avi-On, or other control systems)

FINISH

- 3-5 mils electrostatic powder coat.
- NLS Light's standard high-quality finishes prevent corrosion protects against and extreme environmental conditions

WARRANTY

Five-year limited warranty for drivers and LEDs.

LISTINGS

- UL Listed in compliance with UL 1598, the Standard for Safety of Luminaires, including the applicable wet location requirements
- Compliant with UL 8750 LED driver design and test safety standards
- CSA C22.2 No. 250.0

BUY AMERICAN OPTION

While all of the NLS Lighting products listed in this document qualify for the Buy America(n) Act of 1933, we reserve the right to change our listings without notice.

The information provided above is for general informational purposes only. We encourage you to consult legal professionals for advice particular to your projects concerning BAA, TAA, BABA or Buy America.

Additional NLS Products that meet BAA, TAA standards can be found at the following link:

<https://nslighting.com/buy-american/>



The information and specifications on this document are subject to change without any notification. All values are design, nominal, typical or prorated values when measured under internal and external laboratory conditions.



701 Kingshill Place, Carson, CA 90746
Call Us Today (310) 341-2037

nslighting.com

PRODUCT SPECIFICATIONS

LIRA BOLLARD - HEIGHT CHART - WHITE LED

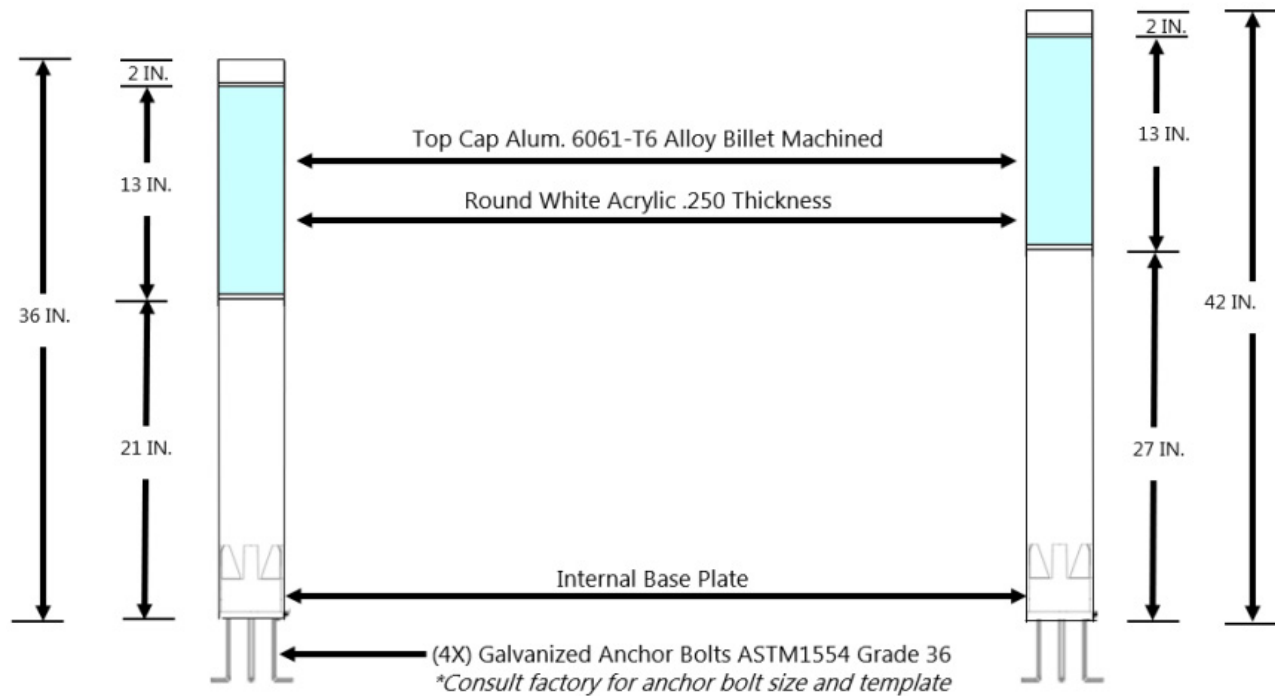
PART NUMBER	TOP CAP HEIGHT	LENS HEIGHT	BODY HEIGHT	TOTAL HEIGHT
LIR-B-(6 or 8)-SYM-22-30K8-36	2"	13"	21"	36"
LIR-B-(6 or 8)-SYM-22-40K8-36	2"	13"	21"	36"
LIR-B-(6 or 8)-SYM-22-50K8-36	2"	13"	21"	36"
LIR-B-(6 or 8)-SYM-22-30K8-42	2"	13"	27"	42"
LIR-B-(6 or 8)-SYM-22-40K8-42	2"	13"	27"	42"
LIR-B-(6 or 8)-SYM-22-50K8-42	2"	13"	27"	42"

*VRB requires a minimum body height of 36"

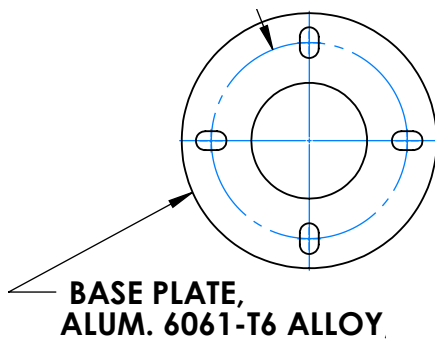
LIRA BOLLARD - HEIGHT CHART - RGBW LED

PART NUMBER	TOP CAP HEIGHT	LENS HEIGHT	BODY HEIGHT	TOTAL HEIGHT
LIR-B-(6 or 8)-SYM-34-RGBW-36	2"	13"	21"	36"
LIR-B-(6 or 8)-SYM-34-RGBW-42	2"	13"	27"	42"

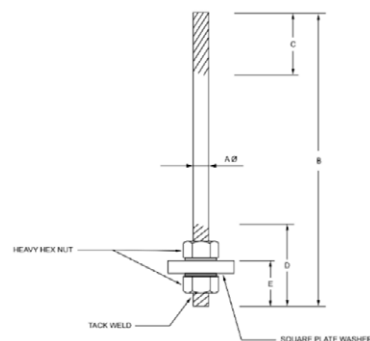
*VRB requires a minimum body height of 36"



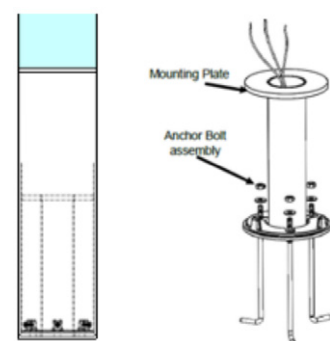
BASE PLATE



ANCHOR BOLTS 1/2"X 24"



VANDAL RESISTANT BASE



PRODUCT SPECIFICATIONS

LIRA BOLLARD - LUMEN DATA CHART - WHITE LED

PART NUMBER	LUMENS	LPW	WATTS
LIR-B-(6 or 8)-SYM-22-30K8-36	2860	130	22
LIR-B-(6 or 8)-SYM-22-40K8-36	2948	134	22
LIR-B-(6 or 8)-SYM-22-50K8-36	3036	138	22
LIR-B-(6 or 8)-SYM-22-30K8-42	2860	130	22
LIR-B-(6 or 8)-SYM-22-40K8-42	2948	134	22
LIR-B-(6 or 8)-SYM-22-50K8-42	3036	138	22

LIRA BOLLARD - LUMEN DATA CHART - RGBW LED

PART NUMBER	LUMENS	LPW	WATTS
LIR-B-(6 or 8)-SYM-34-RGBW-36	2120	62	34
LIR-B-(6 or 8)-SYM-34-RGBW-42	2120	62	34

MARINE GRADE FINISH (MGF)

The **(MGF)** is a multi step process. Chemically washed in a 5 stage cleaning system. Pre-baked. Powder coated 3-5 mils of Zinc Rich Super Durable Polyester Primer. Oven Baked. Finished Powder Coating of Super Durable Polyester Powder Coat 3-5 mil thickness.



Powder Coat Finish

3-5 mil Powder Coat

Primer Layer

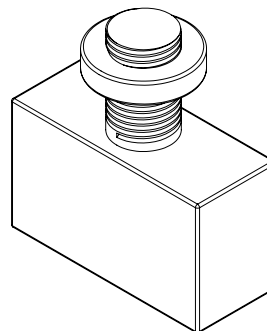
3-5 mil Zinc Rich Super Durable Polyester Primer

Prepared Casting

Chemically washed in multi Step 5 stage cleaning process

BUTTON PHOTOCELL

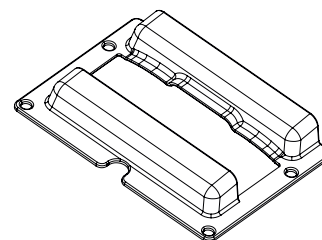
Photo Cell for dusk to dawn operation.



SHIELDING OPTIONS (HSS)

SHIELDS (HSS)—House Side Shield (HSS) is designed for full property line cut-off.

HOUSE SIDE SHIELD



PRODUCT SPECIFICATIONS

FIXTURE GROUPING AND DETAILED PROGRAMMING

Please select "DMX" option for sophisticated grouping or programming requirements. Contact the factory for further details regarding DMX/RDM application requests. The LIRA Light Column with the DMX"option will be compatible with DMX/RDM Controls Systems.

When the DMX"option is selected, the fixture will be provided with an eldoLED LINEARdrive driver, that will provide infinite color control for low-voltage LED applications ranging from single color for accent and cove lighting all the way up to RGBW for full color entertainment product solutions. This constant voltage LED driver is DMX/DALI compatible and allows you to create your color or dynamic show. Symbiosis ensures the LED driver works seamlessly together with LED modules, controls and intelligent luminaire elements. If your application requires additional controls, the controls system would be provided by others.

Wiring diagram LINEARdrive DC 100

(LIN100D1)



CAUTION: incorrect installation of the device can cause irreparable damage to the device and the connected LEDs. Therefore, the device must only be connected and installed by a qualified electrician. All applicable regulations, legislation and building codes must be observed!

12V - 28V DC IN

To connect the driver/controller to a 12-28V DC power supply unit (PSU), connect the PSU's positive voltage supply wire to the VDC+ connector and the PSU's negative voltage supply wire to the VDC- connector.

EXT IN (OPTIONAL)

You have the possibility to connect an external control device (0-10V control device, 10kΩ potentiometer or show selection switch) to the driver/controller's Ext in+ and Ext in- connector. Configure the driver/controller for use with an external control device over the 3-button user interface.

DMX IN/LEDSYNC THRU (OPTIONAL)

Use these connectors when the driver/controller is used in a DMX network. For DMX in, connect the network cable's DMX+, DMX- and DMX shielding wire (the orange/white, orange and brown ble) to the DMX in+, wire in a CAT5 ca DMX in- and DMX in shield connector respectively. For LedSync thru, connect the network cable's data+, dataand shielding wire to the LedSync thru+, LedSync thru- and LedSync shield connector respectively.

LED GROUPS

Indicates the location of the connectors to which you can connect your LED groups. R(ed) represents channel 1, G(reen) represents channel 2, B(lue) represents channel 3 and W(hite) represents channel 4. The default group color allocation can be changed over the 3-button user interface.