



**A<sup>4</sup> Double <sup>180</sup>**

Architectural Arm 4 is constructed of extruded aluminum tubing. Integrates with poles or tenons of 3-1/2", 4", 4-1/2", or 5" OD and is secured with 3/8" stainless steel Allen set screws.

Contact NLS for custom configuration or others mounting options. Arms are designed, tooled, fabricated and assembled in the USA.



**A<sup>4</sup> Single**



**A<sup>4</sup> Wall Mount**



Project Name:

Type:

## ARCHITECTURAL ARM 4 ORDERING GUIDE

Cat#	Mounting	Pole Diameter	Color
Architectural Arm 4 Small <b>(A4-S)</b>	Single <b>(SGL)</b>	3" Round OD <b>(3R)</b>	Bronze Textured <b>(BRZ)</b>
Architectural Arm 4 Large <b>(A4-L)</b>	Double 180° <b>(D180)</b>	4" Round OD <b>(4R)</b>	White Textured <b>(WHT)</b>
	Wall Mount <b>(WM)</b>	4-1/2" Round OD <b>(412R)</b>	Smooth White Gloss <b>(SWT)</b>
		5" Round OD <b>(5R)</b>	Silver Metallic <b>(SVR)</b>
			Black Textured <b>(BLK)</b>
			Smooth Black Gloss <b>(SBK)</b>
			Graphite Textured <b>(GPH)</b>
			Grey Textured <b>(GRY)</b>
			Green Textured <b>(GRN)</b>
			Hunter Green Textured <b>(HGN)</b>
			Custom <b>(CS)</b>

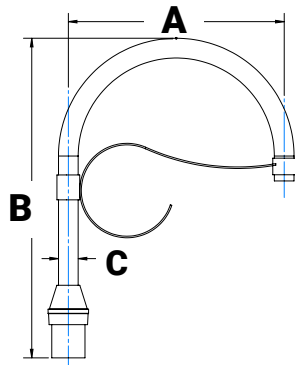
NOTES:



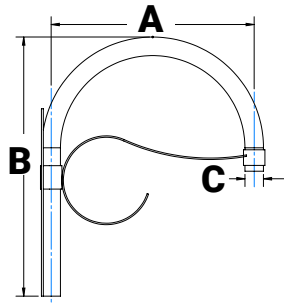
701 Kingshill Place, Carson, CA 90746  
Call Us Today (310) 341-2037

[nlsighting.com](http://nlsighting.com)

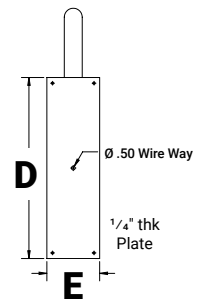
## PRODUCT SPECIFICATIONS



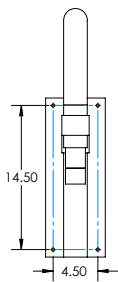
**A<sup>4</sup> Single**



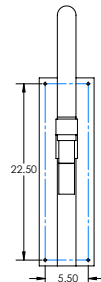
**A<sup>4</sup> Wall Mount**



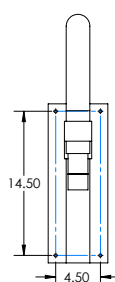
### WM Drill Patterns



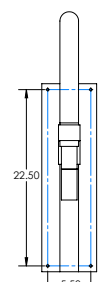
**A<sup>4</sup>-S-WM**



**A<sup>4</sup>-L-WM**



**A<sup>4</sup>-S-WM**



**A<sup>4</sup>-L-WM**

MODEL	A	B	C	D	E	EPA SGL	EPA DBL	EPA WM
<b>A4-S</b>	17 in.	30 in.	1 7/8" Ø (1-1/2 in. SCH40)	N/A	N/A	.40	-	-
<b>A4-S-WM</b>	17 in.	25 in.	1 7/8" Ø (1-1/2 in. SCH40)	20 in.	7 in.	-	-	.31
<b>A4-L</b>	26 in.	38 in.	1 7/8" Ø (1-1/2 in. SCH40)	N/A	N/A	.61	.95	-
<b>A4-L-WM</b>	26 in.	33 in.	1 7/8" Ø (1-1/2 in. SCH40)	24 in.	7 in.	-	-	.53

MODEL	SGL	DBL	WALL
<b>A4-S</b>	7.51 lbs		7.67 lbs
<b>A4-L</b>	13.84 lbs	22.62 lbs	12.77 lbs