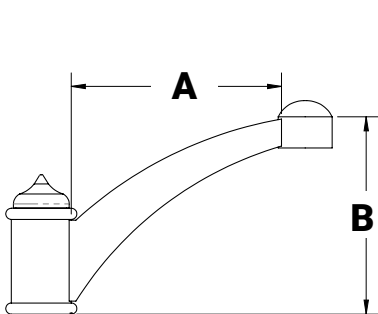


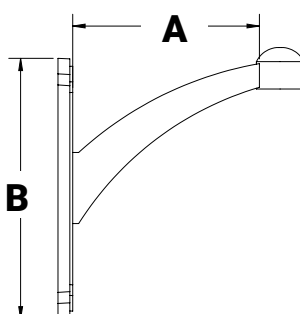


Architectural Arm 13 is constructed of extruded aluminum tubing and available for both post top and pendant mount luminaires. Integrates with poles or tenons of 3-1/2", 4", 4-1/2", or 5" OD and is secured with 3/8" stainless steel Allen set screws.

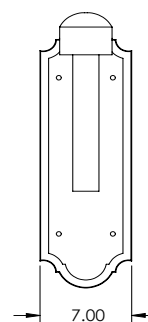
Contact NLS for custom configuration or other mounting options. Designed, tooled, fabricated and assembled in the USA.



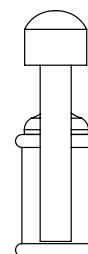
**A<sup>13</sup> Single**



**A<sup>13</sup>-WM**



**A<sup>13</sup>-WM**



**A<sup>13</sup>**

| MODEL        | A      | B     | EPA SGL | EPA DBL | EPA WM |
|--------------|--------|-------|---------|---------|--------|
| <b>A13-L</b> | 16 in. | 12in. | .87     | 1.39    | -      |

| MODEL        | SGL      | DBL       | WALL |
|--------------|----------|-----------|------|
| <b>A13-L</b> | 8.45 lbs | 17.84 lbs |      |



Project Name:

Type:

## ARCHITECTURAL ARM 13 ORDERING GUIDE

| Cat#                                  | Mounting              | Pole Diameter             | Color                          |
|---------------------------------------|-----------------------|---------------------------|--------------------------------|
| Architectural Arm 13 Large<br>(A13-L) | Single<br>(SGL)       | 3-1/2" Round OD<br>(312R) | Bronze Textured<br>(BRZ)       |
|                                       | Double 180°<br>(D180) | 4" Round OD<br>(4R)       | White Textured<br>(WHT)        |
|                                       | Wall Mount<br>(WM)    | 4-1/2" Round OD<br>(412R) | Smooth White Gloss<br>(SWT)    |
|                                       |                       | 5" Round OD<br>(5R)       | Silver Metallic<br>(SVR)       |
|                                       |                       |                           | Black Textured<br>(BLK)        |
|                                       |                       |                           | Smooth Black Gloss<br>(SBK)    |
|                                       |                       |                           | Graphite Textured<br>(GPH)     |
|                                       |                       |                           | Grey Textured<br>(GRY)         |
|                                       |                       |                           | Green Textured<br>(GRN)        |
|                                       |                       |                           | Hunter Green Textured<br>(HGN) |
|                                       |                       |                           | Custom<br>(CS)                 |

NOTES:



701 Kingshill Place, Carson, CA 90746  
Call Us Today (310) 341-2037

[nlsighting.com](http://nlsighting.com)